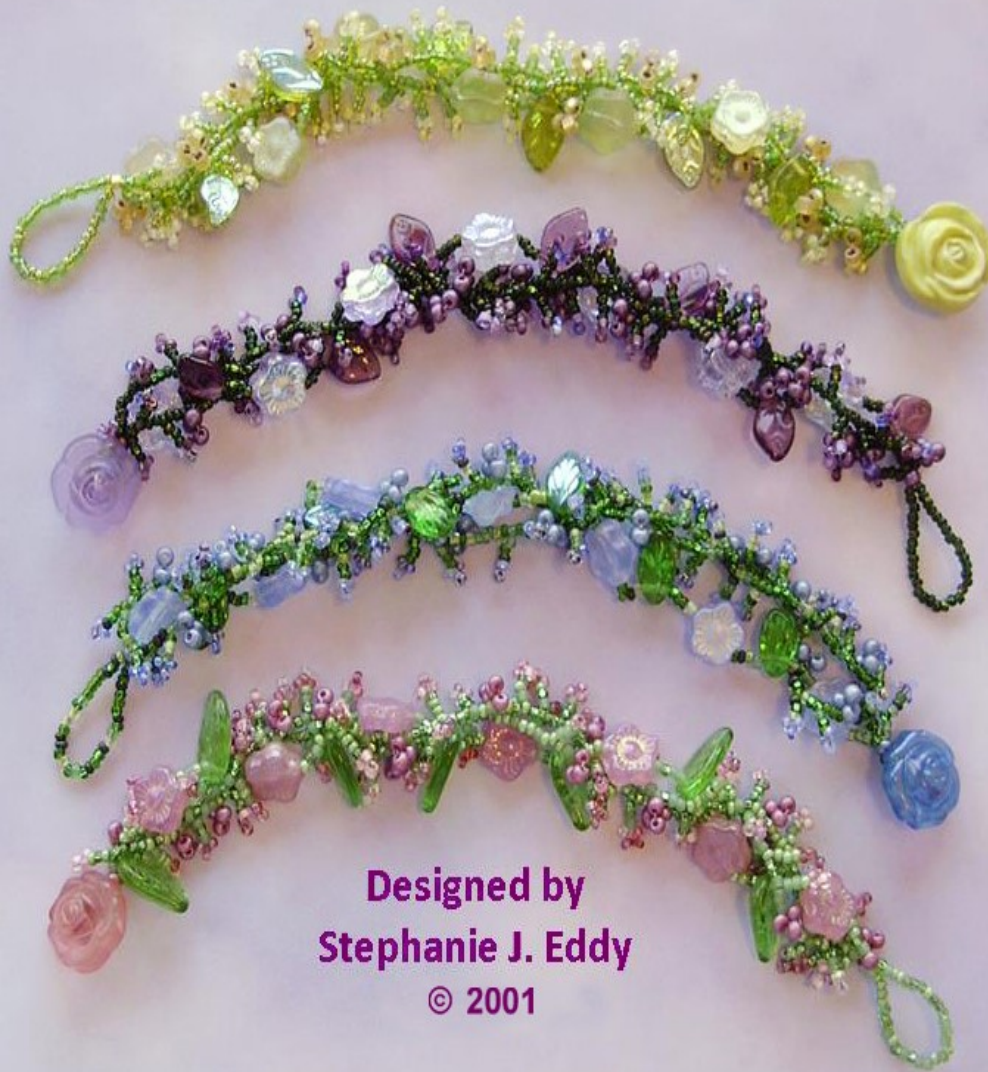


Floral Twig Bracelet



Designed by
Stephanie J. Eddy

© 2001

3-STRAND FLORAL TWIG BRACELET

Created by Stephanie J. Eddy, ©2001

Welcome to the SE Kit program. I hope you enjoy this project. You will need a few simple supplies that are not included in the kit: a size 12 beading needle, a beading thread of your choice (Nymo B or Silamide A) scissors, clear nail polish, pen or pencil.

To begin, measure off 3 yards plus 12-inches of thread and cut. The entire bracelet is completed in one length of thread. Thread the needle and set aside.

Arrange the supplies by whatever method you like best. Some people like their beads spread out on a towel or flat surface, many use divided dishes or trays.

Your kit should contain the following items: **S:** stem color **B:** blossom color **C:** bud color **F:** flowers **L:** leaves, a button and paper ruler.

Tip: My favorite way to bead is by “scooping.” I encourage all bead makers to learn this simple method. It is quick and efficient. Put each color of bead into its own small container, filled nearly to the rim. Using the needle at a slight downward angle, skim across the top layer of beads. Believe it or not, the beads appear to actually jump on the needle. It beats chasing them up and down across a towel and you don't have to see the bead holes for this to work. It takes a little practice but worth the effort...really!

Next, measure your wrist.

To determine the length of your bracelet, wrap the paper ruler around your wrist. Mark this measurement on the ruler with a pen or pencil. If you want the finished bracelet to fit snugly around your wrist, subtract 1/4” from the wrist length. If you want it to slide easily up and down, add 1/4” to the wrist length. Mark the new wrist total on the ruler and circle it.

START: Tie one C bead at the end of the thread with an overhand knot, leaving about a 4-inch tail. This is a STOP BEAD. It will not be removed at the end.

STEM: After the stop bead, add enough S to measure the length of your wrist total (don't include the stop bead .)

When you've added all the stem beads, add another C bead. This will be known as the END BEAD.

You should have a STOP BEAD, STEM beads and an END BEAD.

BUTTON END: String 6 S beads, add the shank button, and 6 more S beads. It's OK if the shank goes over these 12 beads. Go back through the END BEAD forming a loop and catching the button in the loop. See **F1**.

TWIG & BLOSSOM: *String 3 S (for twig) and 3 B (for blossom). Go back through the 3 S only. This will make a triangle loop, which we call a blossom. Go through the next 3 S on the main STEM.* Repeat * making two more TWIG & BLOSSOM stitches.

BUD: add three C, go into the next 3 S. This also forms a triangle or a bud. See **F2**.

Continue across the stem, alternating 3 TWIG & BLOSSOM, 1 BUD until you reach the STOP BEAD again. This sequence will be different for everyone depending on the size or your wrist. Work the pattern as close to the STOP BEAD as possible, go through the STOP BEAD.

Add approximately 1 3/4" of S, enough to form a loop that is big enough to go over the button. Go back through the STOP BEAD. Check to make sure the closure loop goes over the button before continuing. See **F3**.

You have completed the first of three stems across.

To continue the SECOND stem, add enough S beads to equal the length of your wrist total. Measure the second stem individually on the ruler instead of measuring it against the previous stem. It doesn't have to measure "to the bead," but it should be close.

Go through the END BEAD and around through the 12 beads that form the button loop, coming out the END BEAD and headed toward the opposite end. See **F4**.

When the project is complete, you will have reinforced each stem going across it twice and each loop end three times.

Continue alternating 3 TWIG & BLOSSOM stitches, 1 BUD stitch, until you reach the STOP BEAD again. See **F5**.

Go through the STOP BEAD and continue through all the beads that make the closure loop, then out the STOP BEAD. See **F6**.

Second stem complete.

FLOWERS & LEAVES: The third row is quick and decorative. ****Add 3 S, 1 leaf, 3 S, 1 flower.**** See **F7**.

Continue pattern ** across until the length equals your total wrist length. Measure again with the ruler. Go through the END BEAD, around the button shank beads and back through the END BEAD. Continue back through the FLOWER & LEAF stem to reinforce. Go through the STOP BEAD and around the loop closure (for a third time) and out the STOP BEAD. See **F8**.

The thread should meet the tail. Tie both threads together twice using an overhand knot. Dot with nail polish. Tie two more knots. With the needle, work both ends of the thread, one at a time, back into one of the stems about an inch. Before you pull the thread all the way through, dot it with more polish beginning at the knot and out about an 1-inch, then pull through. Cut thread close to beads.

You can wear the bracelet twisted or braided. Braiding and twisting will make the bracelet size slightly smaller.

Twist the bracelet before you button it. It's not permanent, but it's quick.

Braiding is a little trickier. Lay the bracelet on a flat surface and start braiding in the center. As you weave, the braid will work itself out to both ends. Braid several times. To keep the braid in place, finish by holding 2 stands in your left hand, and 1 strand in your right. This forms a small circle or hole. Bring the button end of the bracelet through the hole. It doesn't matter if you bring it through the front or through the back of the hole. Straighten.

I hope you enjoyed this journey and will discover many more projects using the stitches you have learned.

Until we bead again, *Stephanie*

